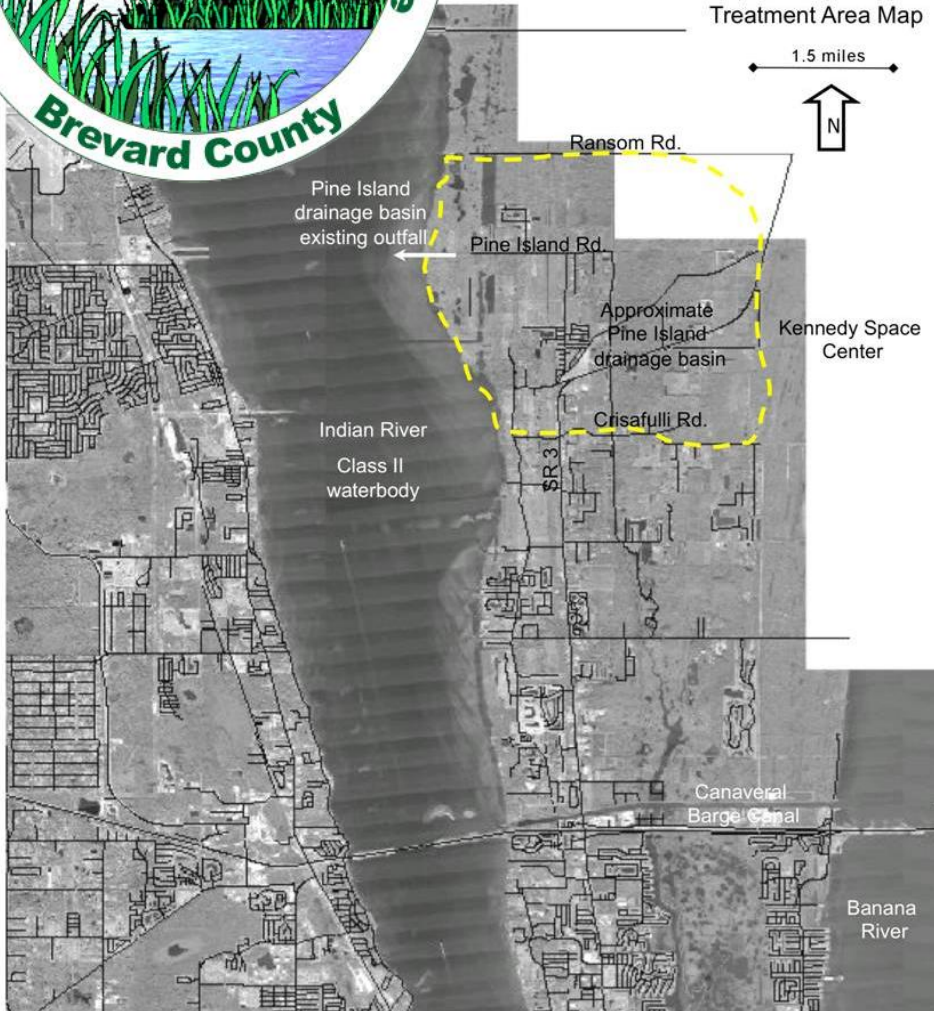
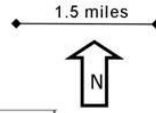




Pine Island – North Merritt Island Drainage Improvements

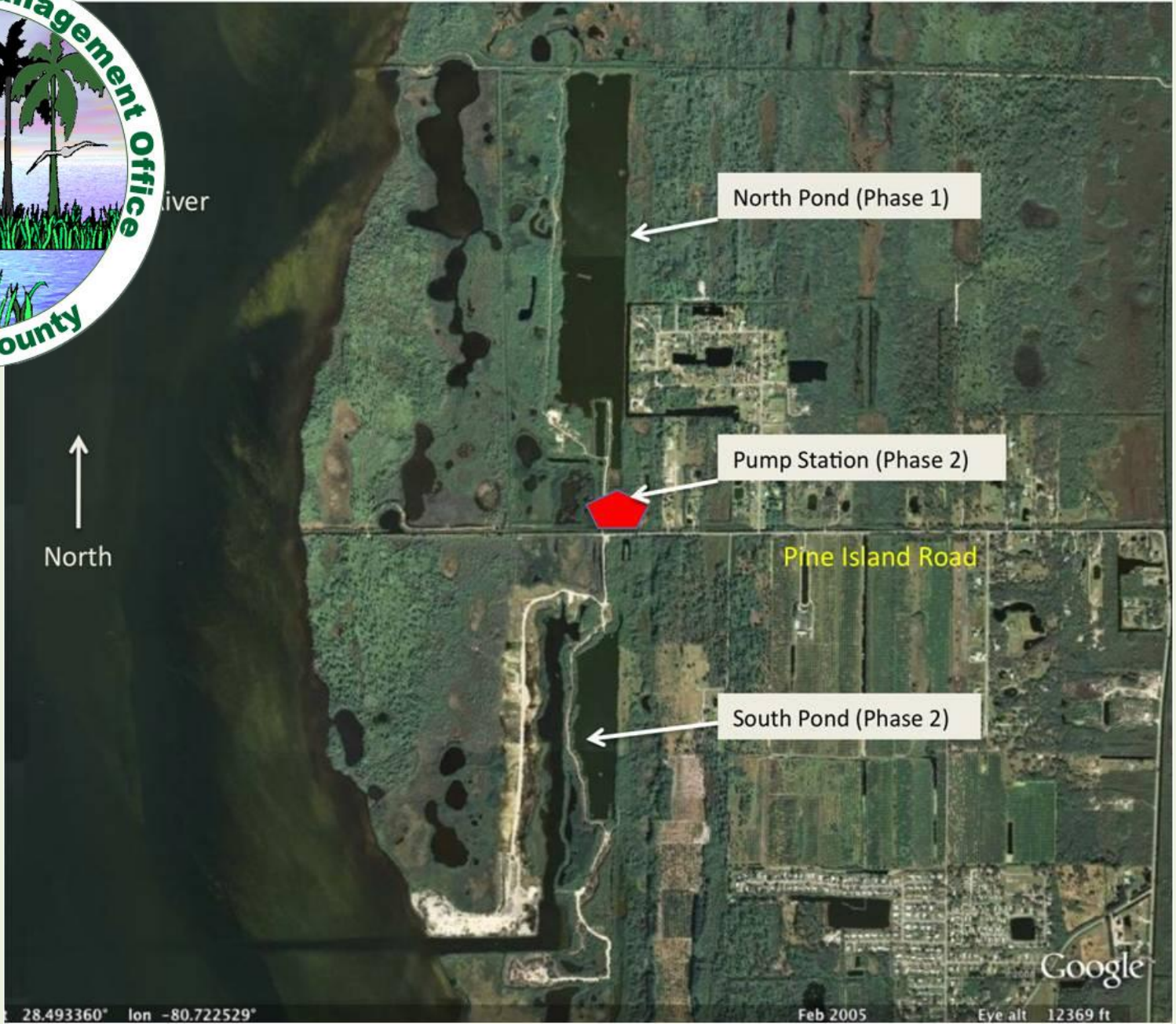
Pine Island Stormwater Improvement Project Treatment Area Map



This project will improve water quality discharge to the [Indian River Lagoon](#) and reduce flooding. It consists of converting two existing borrow pits to stormwater treatment ponds within the Pine Island Conservation area and adding large pumps to increase retention time and decrease flooding. The improvements will be done on lands currently owned by the St. Johns River Water Management District and the Brevard County Environmentally Endangered Lands program. Permitting of the project is expected to be complete by FY 09-10. The project consists of two phases: Phase I includes modifications to the north borrow pit to divert the flow of the Pine Island Road ditch through the borrow pit for pollution control and treatment. A \$500,000 FDEP grant is anticipated to fund a portion of the Phase I construction costs. Phase II consists of constructing a pump station and the piping needed for the flood reduction, plus connection to the south borrow pit. Currently, only a portion of the Phase II project is funded.



iver



North Pond (Phase 1)

Pump Station (Phase 2)

Pine Island Road

South Pond (Phase 2)

28.493360° Lon -80.722529°

Feb 2005

Eye alt 12369 ft

Google